

SUBSTANCE ABUSE PREVENTION

FY 2015-16 Program Brief

LENAWEE SUBSTANCE ABUSE PREVENTION COALITION

REDUCING CHILDHOOD AND UNDERAGE DRINKING



Access to Alcohol in Lenawee

	2013-14	2015-16	LSAPC Intervention
Percentage of students who ever drank alcohol	47.5% (600)	45.2 (750)	
Percentage of students who have ever been drunk	31.6% (400)	29.6% (494)	
Among students who drank recently, the percentage who usually got their own alcohol by buying it at a restaurant, bar, or club during the past 30 days	1.1% (3)	1.1% (4)	Alcohol vendor education Alcohol Compliance Checks Party Patrols TIPS Responsible Alcohol Server Training
Among students who drank recently, the percentage who usually got their own alcohol by someone giving it to them during the past 30 days	44.3% (124)	43.1% (153)	Do Your Part: Don't be a party to underage drinking

*Michigan Department of Education, Michigan Profile for Healthy Youth 2013-14, and 2015-16

Community Trials Intervention to Reduce High-Risk Drinking is a Legacy Program according to the National Registry of Evidence Based Programs and Practices of the Substance Abuse and Mental Health Services Administration.

“Community Trials Intervention To Reduce High-Risk Drinking is a multicomponent, community-based program developed to alter the alcohol use patterns and related problems of people of all ages. The program incorporates a set of environmental interventions that assist communities in

- (1) using zoning and municipal regulations to restrict alcohol access through alcohol outlet density control;
- (2) enhancing responsible beverage service by training, testing, and assisting beverage servers and retailers in the development of policies and procedures to reduce intoxication and driving after drinking;
- (3) increasing law enforcement and sobriety checkpoints to raise actual and perceived risk of arrest for driving after drinking;
- (4) reducing youth access to alcohol by training alcohol retailers to avoid selling to minors and those who provide alcohol to minors; and
- (5) forming the coalitions needed to implement and support the interventions that address each of these prevention components. The program aims to help communities reduce alcohol-related accidents and incidents of violence and the injuries that result from them.

The program typically is implemented over several years, gradually phasing in various environmental strategies; however, the period of implementation may vary depending on local conditions and goals.” NREPP

The Lenawee Substance Abuse Prevention Coalition partners with the Lenawee Sheriff Department to provide 100% of alcohol vendors with important information on Michigan Liquor Control Commission rules, Michigan laws, and ID checking best practices. 173 liquor license holders were then investigated for compliance with the Michigan Liquor Code. 25 retailers were ineligible for a compliance check, and youth decoys checked 148 vendors. Of those completed checks, 14 vendors sold alcohol to the minor decoy in the presence of undercover law enforcement. Clerks were ticketed and a complaint was lodged with the Michigan Liquor Control Commission regarding each vendor which violated. This is a 90% compliance rate.

FISCAL YEAR	SALES TO MINORS	TOTAL NUMBER OF COMPLIANCE CHECKS	RATE OF COMPLIANCE
2007-2008	9	105	91%
2008-2009	14	149	91%
2009-2010	20	164	88%
2010-2011	32	161	80%
2011-2012	24	157	85%
2012-2013	18	139	88%
2013-2014	16	170	91%
2014-2015	11	137	92%
2015-2016	14	148	90%

- One goal of alcohol compliance checks is to reduce youth access to alcohol. A lower percentage (66% to 62%) of Lenawee students reported that alcohol is easy or very easy to get in 2015 than two years prior. This data comes from the Michigan Department of Education, Michigan Profile for Healthy Youth 2013-14 and 2015-16.

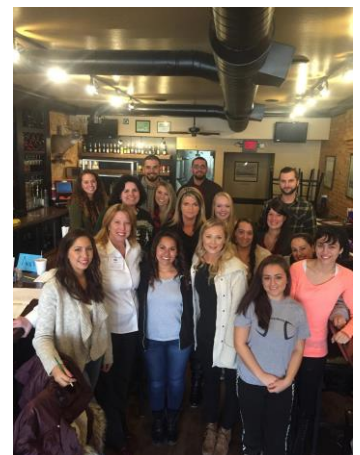


The Lenawee Substance Abuse Prevention Coalition partners with alcohol retailers to provide responsible alcohol server training to servers.

“TIPS® (Training for Intervention Procedures) is a dynamic, skills-based training program designed to prevent intoxication, drunk driving and underage drinking by enhancing the fundamental "people skills" of servers, sellers and consumers of alcohol. TIPS gives individuals the knowledge and confidence they need to recognize potential alcohol-related problems and intervene to prevent alcohol-related tragedies.” TIPS

In 2015-16, 76 servers received training and 97% received certification from the Michigan Liquor Control Commission. These servers learned to rely on behavior cues and intoxication rate factors to assess customers' blood alcohol content. In this way, servers learn to avoid legal consequences of selling alcohol to minors and overserving adult customers. All these skills make Lenawee a safer and healthier place in which to live.

On December 16, 2015 the Lenawee Substance Abuse Prevention Coalition, Adrian Police Department, and Sauce Italian Grill partnered to produce a **front page article** in the Daily Telegram entitled, “Fighting Drunken Driving.”



	2013-14	2015-16
Percentage of students who reported sort of easy or very easy to get alcohol	65.7% (830)	61.8% (1019)
Among students who drank recently, the percentage who usually got their own alcohol by buying it in a store or gas station during the past 30 days	2.1% (6)	3.4% (4)
Among students who drank recently, the percentage who usually got their own alcohol by buying it at a restaurant, bar, or club during the past 30 days	1.1% (124)	1.1% (153)

- The Lenawee County Sheriff Department conducted a **party patrol** on January 10. Surveys in the violator's school showed that of 165 students polled, 61% (101) of students increased awareness of legal risk of being charged with Minor in Possession of Alcohol and 61% (101) of students increased awareness of health risks of alcohol. Scheduled party patrols on April 30 and May 7th resulted in no minor party arrests. Please include total number of students. One Party patrol has increased youth awareness of the legal consequences of being charged with Minor in Possession of Alcohol. By increasing the perception of the risk of harm, theory has proven that use will decrease. The 2015-16 MiPHY data indicates a reduction in the percentage of youth who have ever drank alcohol. The average age of first use has increased slightly, and the percentage of youth who have had five or more drinks of alcohol in a row decreased.
- The Lenawee Substance Abuse Prevention Coalition has membership representation from twelve community sectors meeting monthly. Coalition attendance has averaged 89% from all 12 sectors. Participation has recently included State Senator Dale Zorn, Narcotics Anonymous outreach person, a realtor, an addiction physician, specialty courts coordinator, and an additional school liaison officer.

LSAPC Community Sector Attendance Chart

Sector	Rate
Health Care Professionals	100%
Schools	100%
Law enforcement	92%
State, local and tribal governmental agencies	100%
Business community	100%
Mental Health	100%
Parents	92%
Media	67%
Youth and youth-serving organizations	83%
Faith community or fraternal organizations	75%
Civic or volunteer groups Including recovery	67%
Other organizations involved in reducing substance abuse	100%
	98%



Many professionals from the Lenawee legal community attended a heroin summit

Billboard at Promedica Bixby Hospital by LSAPC member and RN



Lenawee Addiction Summit 2016

- The Michigan Department of Health and Human Services social norming campaign to reduce youth access to alcohol, Do Your Part- That's Not Right, as localized by students from Jackson College and Siena Heights University promotion materials are in businesses throughout Lenawee. Professional redesign by CAA Marketing professionals improved the campaign visibility. Evaluation of community change will be assessed in July at the Lenawee County Fair by polling adults who visit the Lenawee Sheriff's booth. Do Your Part messaging is consistently placed throughout businesses in Lenawee. Students reported a reduction (from 25% to 17%) in access to alcohol by giving someone else money to buy it. Although higher than the average in Michigan, Lenawee students reported reduced access to alcohol by someone older giving it to them (from 44% to 43%).

DO YOUR PART !

 A 60 day jail term and fine of \$1,000 is the maximum potential sentence for a first offense conviction of furnishing alcohol to a minor.

 For a second offense conviction of furnishing alcohol to a minor, a 90 day jail term and fine of \$2,500 plus drivers' license suspension is possible.



Refuse to supply alcohol to kids under 21



LENAWEE COALITION



DO YOUR PART !

Kids in Lenawee get alcohol from older people who give it to them.

THAT'S NOT RIGHT

- The MiPHY was completed in all eleven public school districts in Lenawee which is an increase over the 2013-14 MiPHY participation of 8 of the 11 public school districts. The LISD and one private school did not participate either MiPHY cycle. 2689 students completed the survey in 2015-16 which is an increase from the 2013-14 MiPHY wherein 1912 students participated.



STAND Out! promotes healthy alternatives, including; sleep; nutrition; and physical activity by:

- o Educating Onsted Middle School students who are in his physical education classes with 10 STAND Out! lessons based on the American Athletic Institute's Life of an Athlete Prevention/Intervention information;
- o Conducting two school-wide STAND Out! events to promote healthy social norms (may include lunchroom events, athletic game events, health fair events, parent- teacher conferences, school-wide assemblies) in partnership between Onsted Schools and Adrian College students.
- o Conducting training to certify other Lenawee County educators to teach STAND Out!;



58% (27 of 47) students report that they got more sleep, 89% (42 of 47) changed diet, 72% (34 of 47) will refuse alcohol, 81% (38 of 47) perceive risk of alcohol use.

